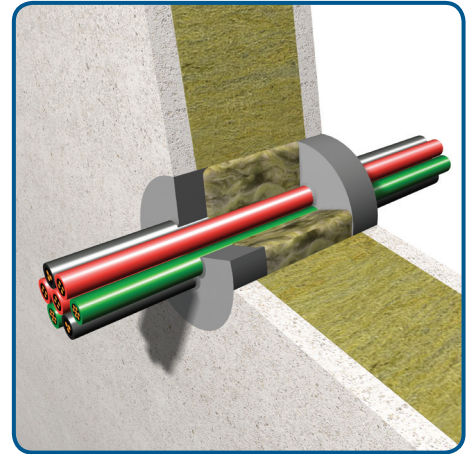


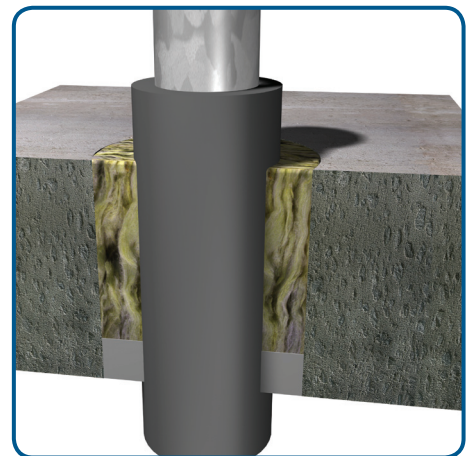
Basic Requirements for Creating a Penetration

Determine the required period of fire resistance of the element, and for loadbearing structures, ascertain the required load. The area to be sealed requires the same fire resistance as the complete floor or wall construction. Ensure enough space around the services to install a fire stopping penetration seal. Otherwise the necessary space has to be created. In order to ensure the stability of the services is maintained under fire conditions, we recommend that all services must be adequately supported at maximum 250mm away from the wall or floor on both sides of the penetration. System fixings, impact protection and suspension elements must be steel. Monal alloys, aluminium etc are not permitted. Accessories such as guard-rails, steel angles, threaded rods. Suspension elements etc. must only be fixed to adjacent solid substrates such as concrete or masonry.



General Information

- Fire stopping sealant expands under pressure;
- Minimum width of joints 5 mm;
- Skin formation after approx. 15 minutes (20 °C and a relative humidity of 65 %);
- Painting is possible after 24 hours; adhesion and compatibility must be checked;
- Once opened containers should be fully used as soon as possible;
- Clean tools with water after use.



Application Conditions

- Minimum +5 °C, maximum +40 °C for both substrate and ambient temperature;
- Relative humidity of more than 65 % will result in extended drying times;
- Substrate must be free of oil, grease and dust;
- Use water to dampen or water-diluted PROMASEAL®-AG and act as a primer for absorbant substrates.

Theoretical Consumption per 310 ml Cartridge

Joint width	10 mm	15 mm	20 mm	25 mm	30 mm	40 mm	50 mm
Joint depth							
10 mm	3.1 m	2.0 m	1.5 m	1.2 m	1.0 m	0.8 m	0.6 m
15 mm	2.0 m	1.3 m	1.0 m	0.8 m	0.6 m	0.5 m	0.4 m
20 mm	1.5 m	1.0 m	0.7 m	0.6 m	0.5 m	0.4 m	0.3 m

Installation: Wall and Floor Condition

- Clean opening and if necessary penetrating services;
- Mask out the working area on the wall/floor with tape;
- Insert mineral wool tightly as backing material;
- Apply correct thickness of sealant;
- Smoothen the sealant surface before skin formation with water-moistened brush or spatula;
- Remove tape;
- Fix identification label.

The products must be applied in accordance with regulations for construction material in general and fire stopping in particular, with the applicable national test certificates and approvals and in accordance with applicable national building regulations. Products may only be applied by trained professionals with adequate knowledge and only after thorough review of the installation guidelines, safety data sheets and national test certificates and approvals. For additional information on how and where to use this product please refer to the Promat handbook or contact your local Promat office. All the relevant documents can be obtained free of charge from the local Promat office. For Non European Union countries separate guidelines are relevant. If required please contact us.